



ECOGENICA

# LEADING THE WAY IN HOT WATER INNOVATION

ECOGENICA® Heat Pumps for a Sustainable Future



## The ECOGENICA® W Series







## Innovation meets Technology

Designed from the ground up to meet the hot water requirements of Australian homes. The ECOGENICA® W Series provides unbeatable value for money, delivering energy savings, for a cheaper more sustainable future.

At ECOGENICA®, we believe in redefining the way you experience warmth in your home. As a pioneering Australian based, global manufacturer, we're dedicated to pushing the boundaries of innovation, sustainability, and cost-efficiency.

Employing the newest generation of natural refrigerants, R290, we ensure that all models within this range have superior energy efficiency and the system meets the highest global standards.

-  **Wi-Fi Enabled Remote Control** A powerful and intuitive user interface enables the remote controlling of the full range of all system functions and includes the ability to zone, manage multiple units, whilst monitoring energy consumption.
-  **Hot & Cold Weather Hot Water** Operates in ambient temp. ranges of -7 to +40 degrees Celsius, with advanced de-icing and heat injection and control technology.
-  **Advanced Monitoring System** Manage the consumption of power, assess the power consumption in real-time, with a constant flow of information on the display, adjust the display to read either the total power consumption or the monthly spend.
-  **Low Operating Noise** Engineered to operate with low noise levels.





Our vision is to create a greener and cleaner world using heat pump technology to deliver reliable, efficient, and affordable hot water that serves to minimise carbon footprint and maximise social impact. We aspire to be the global leader in Heat Pump technology

## WHAT DO OUR CUSTOMERS SAY?

"I own my own home, but I'm always prudent with my decision making. I only invest in things I know are high quality and will give me value for my dollar. These guys ticked the box in both regards and the install was a breeze!"

**FRED**  
RETIREE IN SYDNEY

"I'm one of those people that investigates all options thoroughly before making big decisions. This decision stacked up financially, for convenience and service. It was such an easy step by step process, I couldn't be happier!"

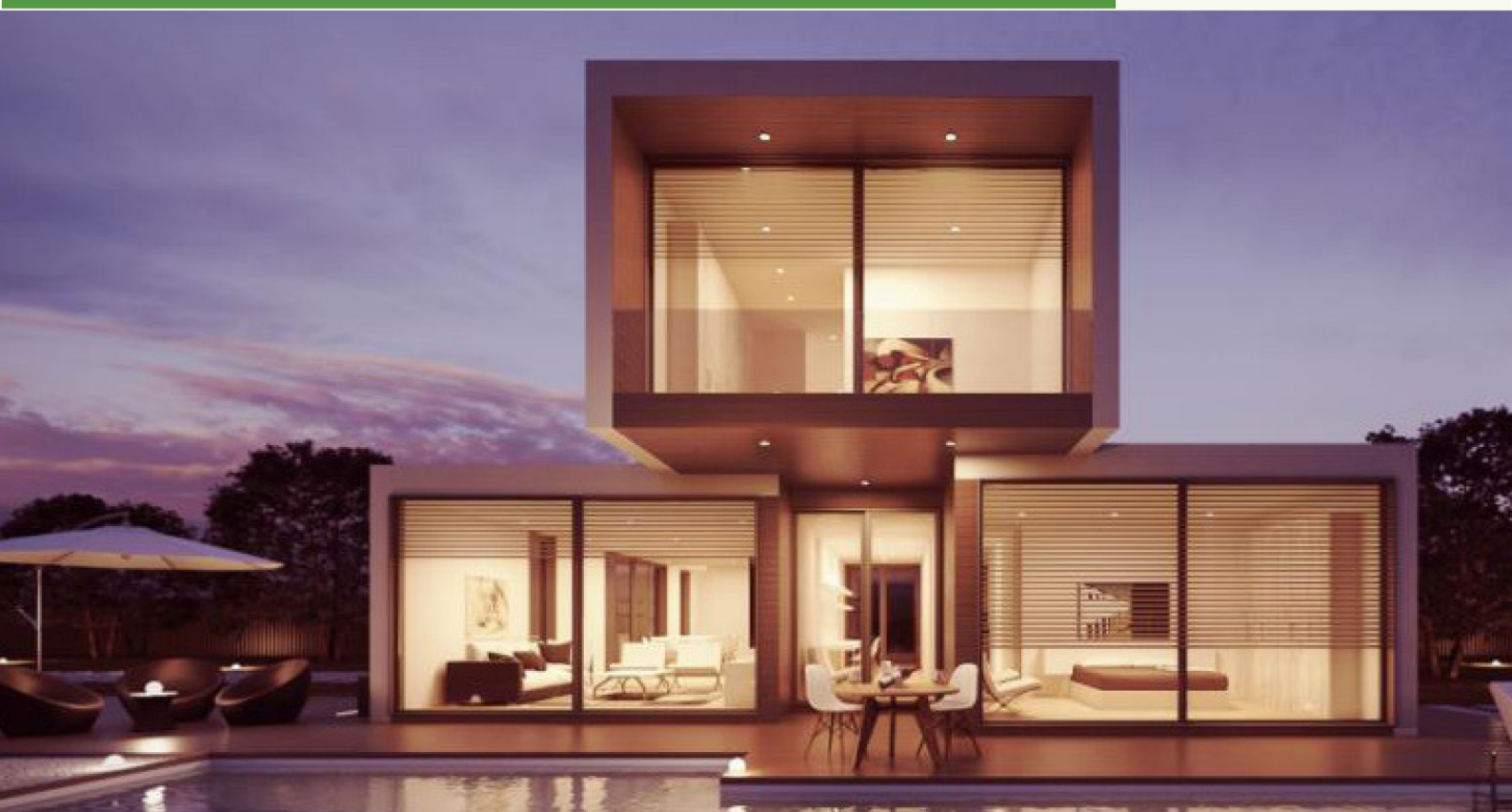
**BRODIE**  
PROFESSIONAL IN DUBBO

"The experience of setting up our heat pump through Ecogenica was so easy and straight forward. The before and after service were exceptional and applying for the rebate was made so easy!"

**ROWAN AND SARAH**  
HOMEOWNERS IN NEWCASTLE



**ECOGENICA**



**CONTACT US AT 0487 560 288**

**[WWW.AAPLUSENERGY.COM.AU](http://WWW.AAPLUSENERGY.COM.AU)**



# Specifications

| Residential Model                                     | EG-330FRE-WR  | EG-300FRE-W   | EG-215FRE-W   |
|---|---------------|---------------|---------------|
| Commercial Model*                                     | EG-330FREC-WR | EG-300FREC-W  | EG-215FREC-W  |
| Wi-Fi   | Yes           | Yes           | Yes           |
| Number of sensors                                     | 2             | 2             | 2             |
| Tank Volume   | 330 L         | 290 L         | 215 L         |
| Input Power   | 1020 W        | 750 W         | 630 W         |
| Energy Savings  | 75.69%        | 80.70%        | 79.00%        |
| Suitable rooms  | 3 to 6        | 3 to 5        | 1 to 2        |
| Recovery rate (Litres/Hour)                           | 99            | 89            | 80            |
| Set hot water temperature °C (residential/commercial) | 60 / 65*      | 60 / 65*      | 60 / 65*      |
| Heat Pump Heating Capacity                            | 4600 W        | 3750 W        | 3150 W        |
| COP   | 4.51 W/W      | 5.0W/W        | 5.0 W/W       |
| Booster Electric Element Heat Capacity                | 4800W         | 3600W         | 3600W         |
| Fittings (inlet & outlet)                             | 32mm / G1 ¼   | 20mm / G ¾    | 20mm / G ¾    |
| Return inlet  | 32mm / G1 ¼   | N/A           | N/A           |
| Height  | 1815 mm       | 1850mm        | 1815 mm       |
| Width   | 620 mm        | 570mm         | 510mm         |
| Heat Pump Size Height                                 | 610 mm        | 545mm         | 545mm         |
| Width   | 840 mm        | 780mm         | 780mm         |
| Depth   | 313mm         | 276mm         | 276mm         |
| Circuit breaker Amps:                                 | 32            | 20            | 20            |
| Power Supply  | 220-240V/50Hz | 220-240V/50Hz | 220-240V/50Hz |
| Operating Temperature Range                           | -7°C ~+43°C   | -7°C ~+43°C   | -7°C ~+43°C   |
| Refrigerant Type                                      | R290          | R290          | R290          |
| Protection Ranking Class                              | IPX4          | IPX4          | IPX4          |
| Connection  | Split Quick   | Split Quick   | Split Quick   |

All temperature is measured in 20 degrees Celsius; water temperature rise 40 degrees Celsius. Energy Savings are at 55 degrees Celsius. Commercial (C) models heat to 65 degrees Celsius, and efficiency decreases at higher temperature. Recovery rate is 40 degrees temperature rise / 20 degrees ambient / 55 degrees water temperature. Quantity showers @ 40 degrees /35 liters/ shower/.

Recovery rates will vary with environmental conditions. Default setting +60 °C residential models/65°C commercial models. Outlet Water Temperature must be less than 50°C hot water outlets. Inlet Water Temperature +14°C Dry Bulb Temperature +19°C Wet Bulb Temperature

+15°C Commercial models have a higher set temperature. Please contact us for details on commercial installations. \*For commercial series. \*\*Reducer to 20mm / G ¾ available on 330 model.

All listed specification are measured at inlet water temperature +14°C; Dry Bulb Temperature +19°C, wet bulb temperature 15 °C and hot water set point 55°C .Recovery rates vary with environmental conditions.

This water heater is with fully welded enamel tank meeting the design requirements: AS 2712 and AS 60335. This water heater complies with AS 3498 and AS/NZS 1677.2

Maximum allowable pressure:4.4MPa

“Heating is the largest single source of greenhouse emissions accounting for almost a quarter of household energy use.”



ECOGENICA

Your new ECOGENICA® W Series heat pump uses a small amount of energy to move heat from one location to another. Heat is absorbed by ozone-friendly r290, a natural refrigerant which does not contribute to global warming.

We support the Australian Government in its commitment to transforming our energy supply system into one that is cheap, clean and reliable.

This lays the foundation for future generations to enjoy more secure, reliable and affordable energy. You can choose an ECOGENICA® product safe in the knowledge that our innovative technology is focused on energy and environment savings. Our hot water pumps are cfc free and utilise renewable energy, extracted from the air.

## CONTACT DETAILS:

**CHECK YOUR  
ELIGIBILITY  
HERE**

**CALL 0487 560 288**

**VISIT [AAPLUSENERGY.COM.AU](http://AAPLUSENERGY.COM.AU)**



ECOGENICA® —

A smart choice for the environment a smart choice for you